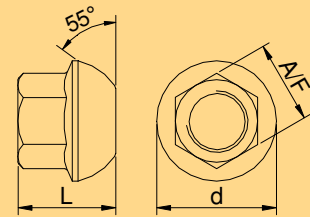


WR – accessories

WR – system

domed anchor nut

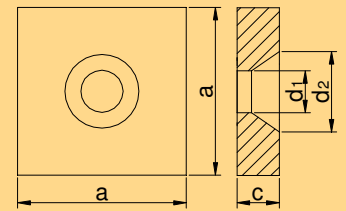
nom Ø [mm]	article-no.	A/F [mm]	d [mm]	L [mm]	material	weight [kg]
26.5	26 WR 2001	50	72	75	S355J2G3F	1,1
32	32 WR 2001	60	80	90	S355J2G3F	1,7
36	36 WR 2001	65	90	100	S355J2G3F	2,2
40	40 WR 2001	70	100	115	GS 34 CrMo 4	3,0
47	47 WR 2001	80	110	135	GS 34 CrMo 4	4,0



solid plate, square

nom Ø [mm]	article-no.	a [mm]	c [mm]	d ₁ [mm]	d ₂ [mm]	weight [kg]
26.5	26 WR 2011	150	35	39	72	5,6
32	32 WR 2011	180	40	45	82	9,3
36	36 WR 2011	200	45	49	92	12,9
40	40 WR 2011	220	45	54	100	15,6
47	47 WR 2011	260	50	64	110	25,3

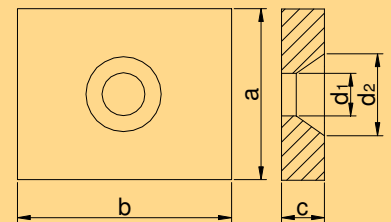
material: S235JR



solid plate, rectangular

nom Ø [mm]	article-no.	a [mm]	b [mm]	c [mm]	d ₁ [mm]	d ₂ [mm]	weight [kg]
26.5	26 WR 2012	130	150	35	39	72	4,8
32	32 WR 2012	140	180	40	45	82	7,6
36	36 WR 2012	150	220	50	49	92	11,7
40	40 WR 2012	160	250	60	54	100	17,1
47	47 WR 2012	200	280	60	64	110	24,0

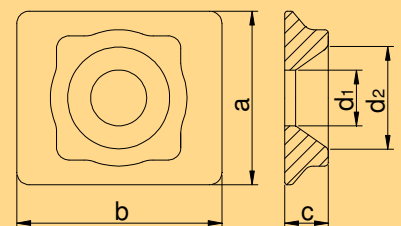
material: S235JR



QR-plate

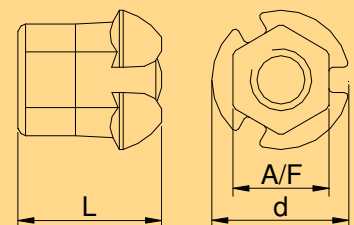
nom Ø [mm]	article-no.	a [mm]	b [mm]	c [mm]	d ₁ [mm]	d ₂ [mm]	weight [kg]
26.5	26 WR 2074	120	130	30	39	72	2,0
32	32 WR 2074	140	165	35	45	82	3,3
36	36 WR 2074	160	180	40	49	92	4,9
40	40 WR 2074	180	195	45	54	100	5,5

material: C45+N



domed anchor nut with grout slots

nom Ø [mm]	article-no.	A/F [mm]	d [mm]	L [mm]	material	weight [kg]
26.5	26 WR 2099	50	72	75	S355J2G3F	1,0
32	32 WR 2099	60	80	90	S355J2G3F	1,6
36	36 WR 2099	65	90	100	S355J2G3F	2,1
40	40 WR 2099	70	100	115	GS 34 CrMo 4	2,7
47	47 WR 2099	80	110	135	GS 34 CrMo 4	3,9



WR – accessories

coupler

nom Ø [mm]	article-no.	d [mm]	L [mm]	material	weight [kg]
26.5	26 WR 3003	50	170	C45+N	1,85
32	32 WR 3003	60	200	C45+N	3,0
36	36 WR 3003	68	210	C45+N	4,2
40	40 WR 3003	70	245	20 Mn VS 6	4,5
47	47 WR 3003	83	270	20 Mn VS 6	7,0

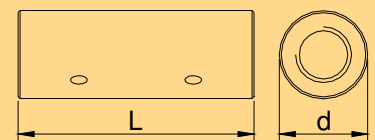
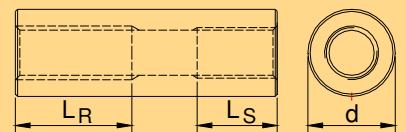
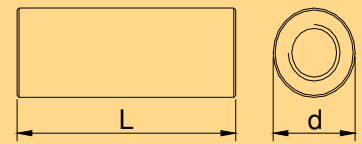
transition coupler

nom Ø [mm]	article-no.	d [mm]	L [mm]	L _R [mm]	L _S [mm]	material	weight [kg]
32	32 WR 3004	60	200	100	55	C45+N	3,2
36	36 WR 3004	68	210	105	80	C45+N	4,3

coupler with set screws

nom Ø [mm]	article-no.	d [mm]	L [mm]	material	weight [kg]
26.5	26 WR 3020	50	170	C45+N	1,85
32	32 WR 3020	60	200	C45+N	3,0
36	36 WR 3020	68	210	C45+N	4,2
40	40 WR 3020	70	245	20 Mn VS 6	4,5
47	47 WR 3020	83	270	20 Mn VS 6	7,0

WR – system



Please note:

This brochure serves basic information purposes only. Technical data and information provided herein shall be considered non-binding and may be subject to change without notice. We do not assume any liability for losses or damages attributed to the use of this technical data and any improper use of our products. Should you require further information on particular products, please do not hesitate to contact us.



DYWIDAG-SYSTEMS International GmbH

Germanenstrasse 8
86343 Koenigsbrunn
Germany

☎ - Phone: +49 (0) 8231 – 9607 – 0
 📠 - Fax: +49 (0) 8231 – 9607 – 40
 🌐 - Web: www.dywidag-systems.com